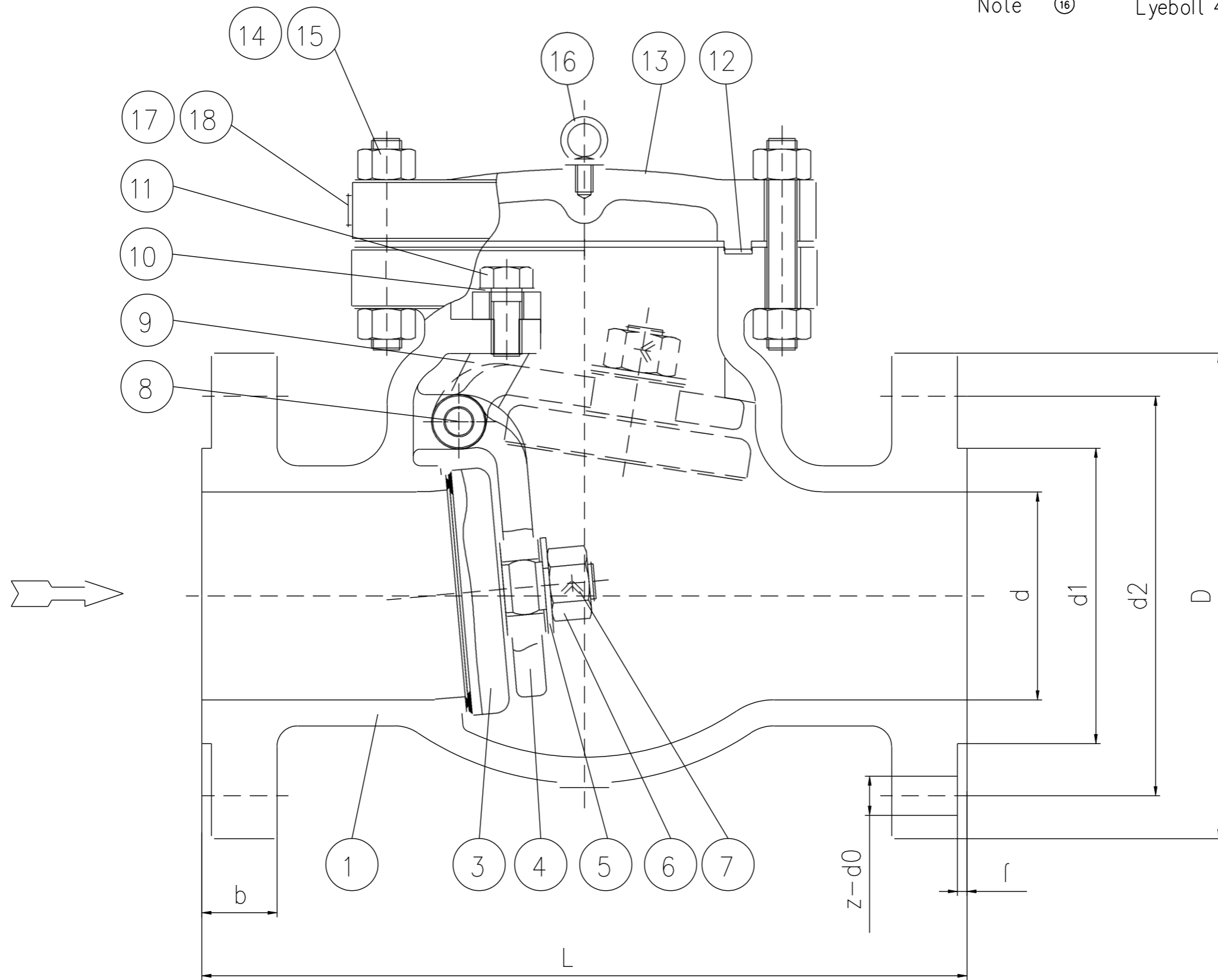


TECHNICAL REQUIREMENTS

- 1 Design by API 594
- 2 Face to Face by ASME B16 10
- 3 Flanged ends by ASME B16 5
- 4 Valves tested by API 598
- 5 Visual inspection for steel castings by MSS SP-55
- 6 Pressure-Temperature Rating by ASME B16 34

TECHNICAL PARAMETER			
TESTING	RATING	150	CLASS
	SHELL	3.0	MPa
	SEALING	2.2	
	AIR	/	
WORKING TEMPERATURE		-29~425	°C
APPLICABLE MEDIUM		W O G	

Note ⑬ Eyeball 4 & Larger



18	Name Plate	SS
17	Rivet	SS
16	Eyebol	ASTM A29 1025
15	Nut	ASTM A194 8M
14	Stud	ASTM A193 B8M
13	Cover	ASTM A351 CF8M
12	Gasket	316+Flexible Graphite
11	Stud	ASTM A193 B8M
10	Washer	SS
9	Fixed hinge	ASTM A351 CF8M
8	Pin	ASTM A276 316
7	Split Pin	SS
6	Nut	ASTM A194 8M
5	Gasket	ASTM A276 316
4	Hinge	ASTM A351 CF8M
3	Disc	ASTM A351 CF8M
2	--	--
1	Body	ASTM A351 CF8M
NO	名称 PART NAME	材料 MATERIAL

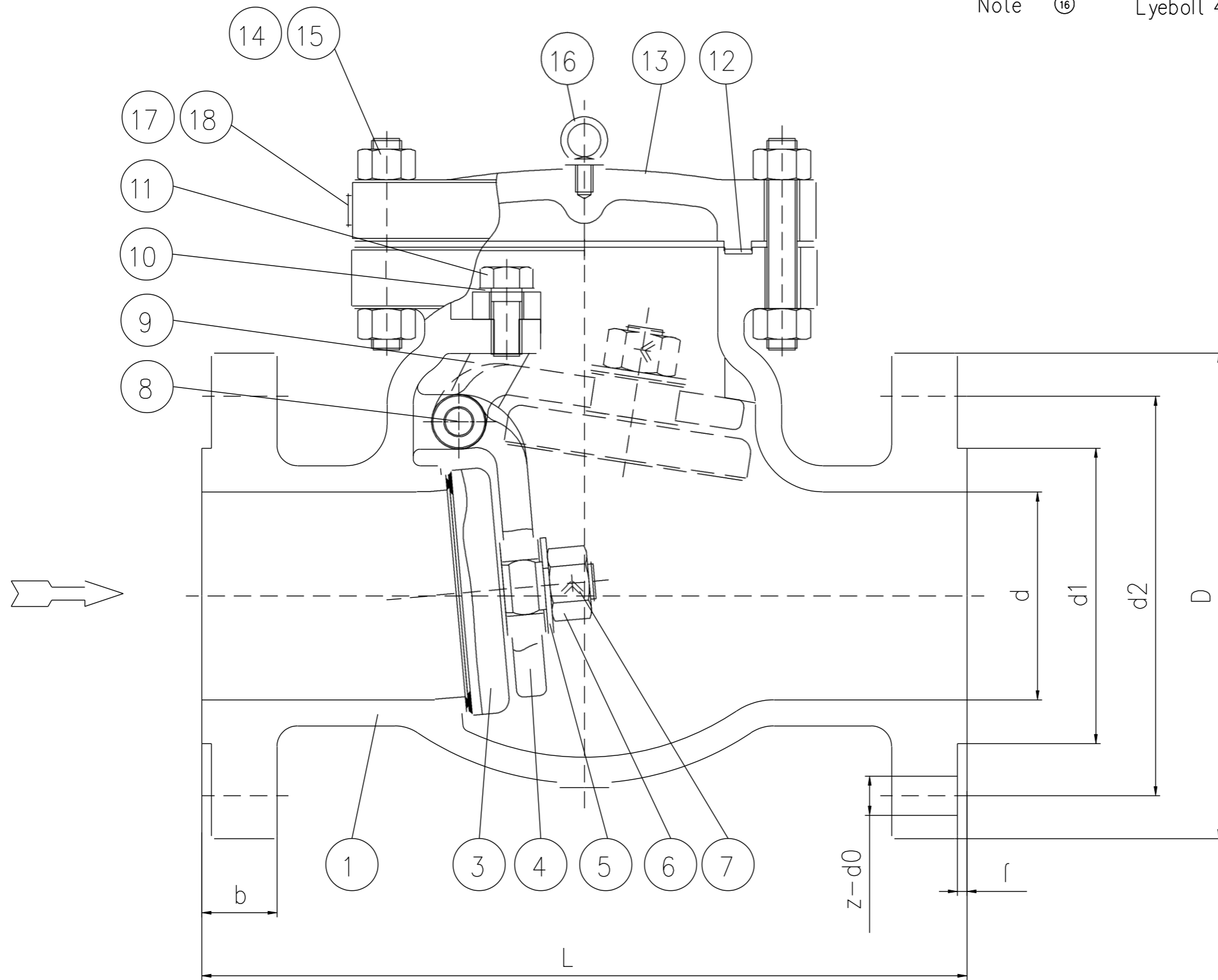
4	100	100	292	230	157.2	190.5	24.3	2	8-19.05
NPS	DN	d	L	D	d1	d2	b	r	z-d0
CAST STEEL CHECK VALVE								Type	
设计 DESIGN BY				GUOCHENG VALVE GROUP CO. LTD					
校对 CHECKED BY				图号 DRAWING NO		版本号 REV			
审核 STANDARD BY				H44W-CL150		1			
批准 APPROVED BY				日期 DATE		2022-06-16			
用户确认 THE USER CONFIRM									

TECHNICAL REQUIREMENTS

- 1 Design by API 594
- 2 Face to Face by ASME B16 10
- 3 Flanged ends by ASME B16 5
- 4 Valves tested by API 598
- 5 Visual inspection for steel castings by MSS SP-55
- 6 Pressure-Temperature Rating by ASME B16 34

TECHNICAL PARAMETER			
TESTING	RATING	300	CLASS
	SHELL	7.5	MPa
	SEALING	5.5	
	AIR	/	
WORKING TEMPERATURE		-29~425	°C
APPLICABLE MEDIUM		W O G	

Note ⑬ Eyeball 4 & Larger



18	Name Plate	SS
17	Rivet	SS
16	Eyebol	ASTM A29 1025
15	Nut	ASTM A194 8M
14	Stud	ASTM A193 B8M
13	Cover	ASTM A351 CF8M
12	Gasket	316+Flexible Graphite
11	Stud	ASTM A193 B8M
10	Washer	SS
9	Fixed hinge	ASTM A351 CF8M
8	Pin	ASTM A276 316
7	Split Pin	SS
6	Nut	ASTM A194 8M
5	Gasket	ASTM A276 316
4	Hinge	ASTM A351 CF8M
3	Disc	ASTM A351 CF8M
2	--	--
1	Body	ASTM A351 CF8M
NO	名称 PART NAME	材料 MATERIAL

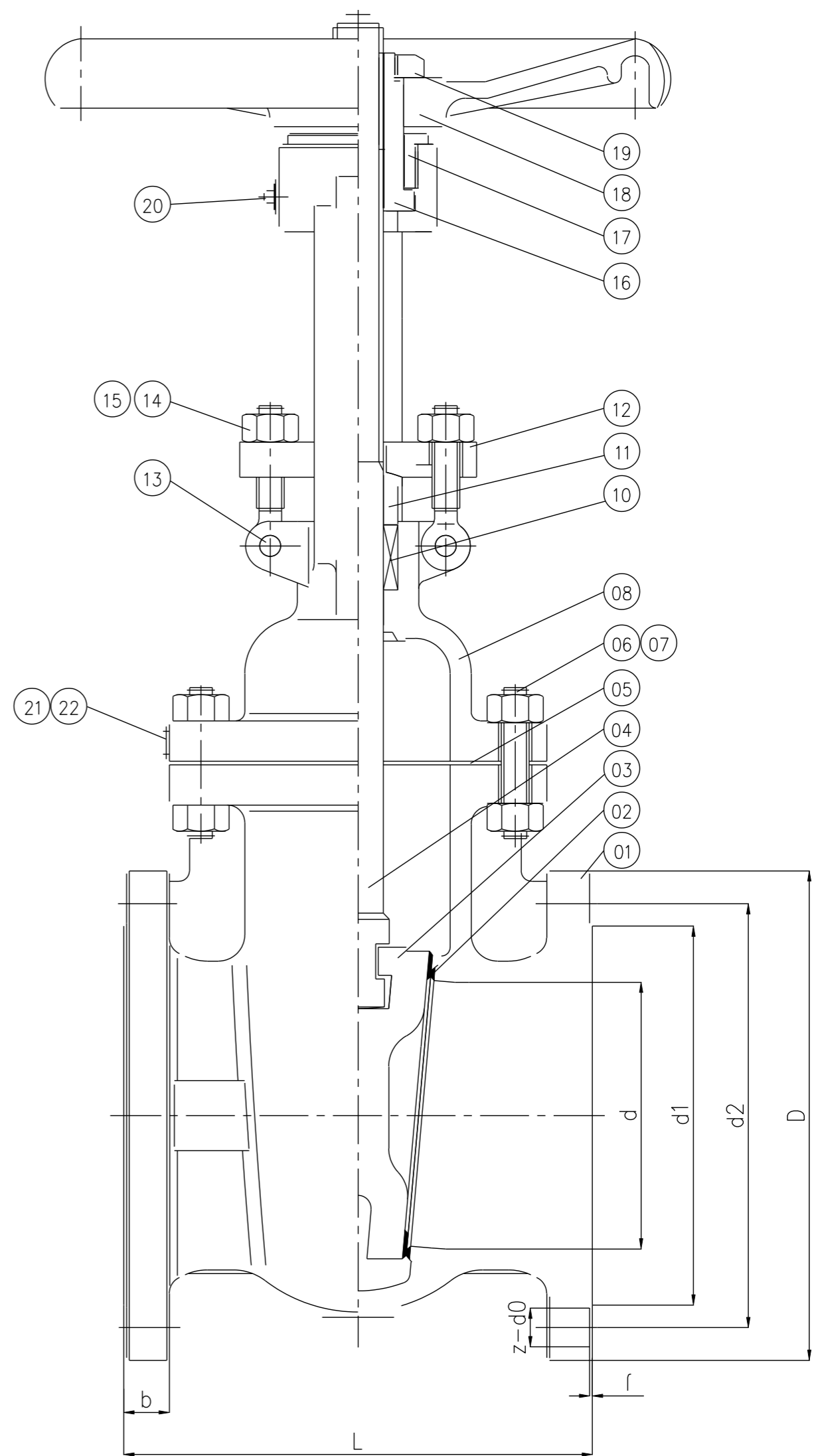
2	50	49	267	165	92.1	127.0	22.7	2	8-19 05		
NPS	DN	d	L	D	d1	d2	b	r	z-d0		
CAST STEEL CHECK VALVE								Type			
设计 DESIGN BY				校对 CHECKED BY				GUOCHENG VALVE GROUP CO. LTD			
执行 STANDARD BY				审核 APPROVED BY				图号 DRAWING NO		版本号 REV	
用户确认 THE USER CONFIRM				日期 DATE				2022-06-16			
				H44W-CL300				1			

6	150	152	267	280	215.9	241.3	25.9	2	8-22.225
NPS	DN	d	L	D	d1	d2	b	f	z-d0

TECHNICAL PARAMETER			
TESTING	RATING	150	CLASS
	SHELL	3.0	
	SCALING	2.2	
	AIR	0.6	
WORKING TEMPERATURE		-29~425	°C
APPLICABLE MEDIUM		W O G	

TECHNICAL REQUIREMENTS

- 1 Design by API 600
- 2 Face to Face by ASME B16.10
- 3 RF flanged ends by ASME B16.5
- 4 Valves tested by API 598
- 5 Visual inspection for steel castings by MSS SP-55
- 6 Pressure-Temperature Rating by ASME B16.34

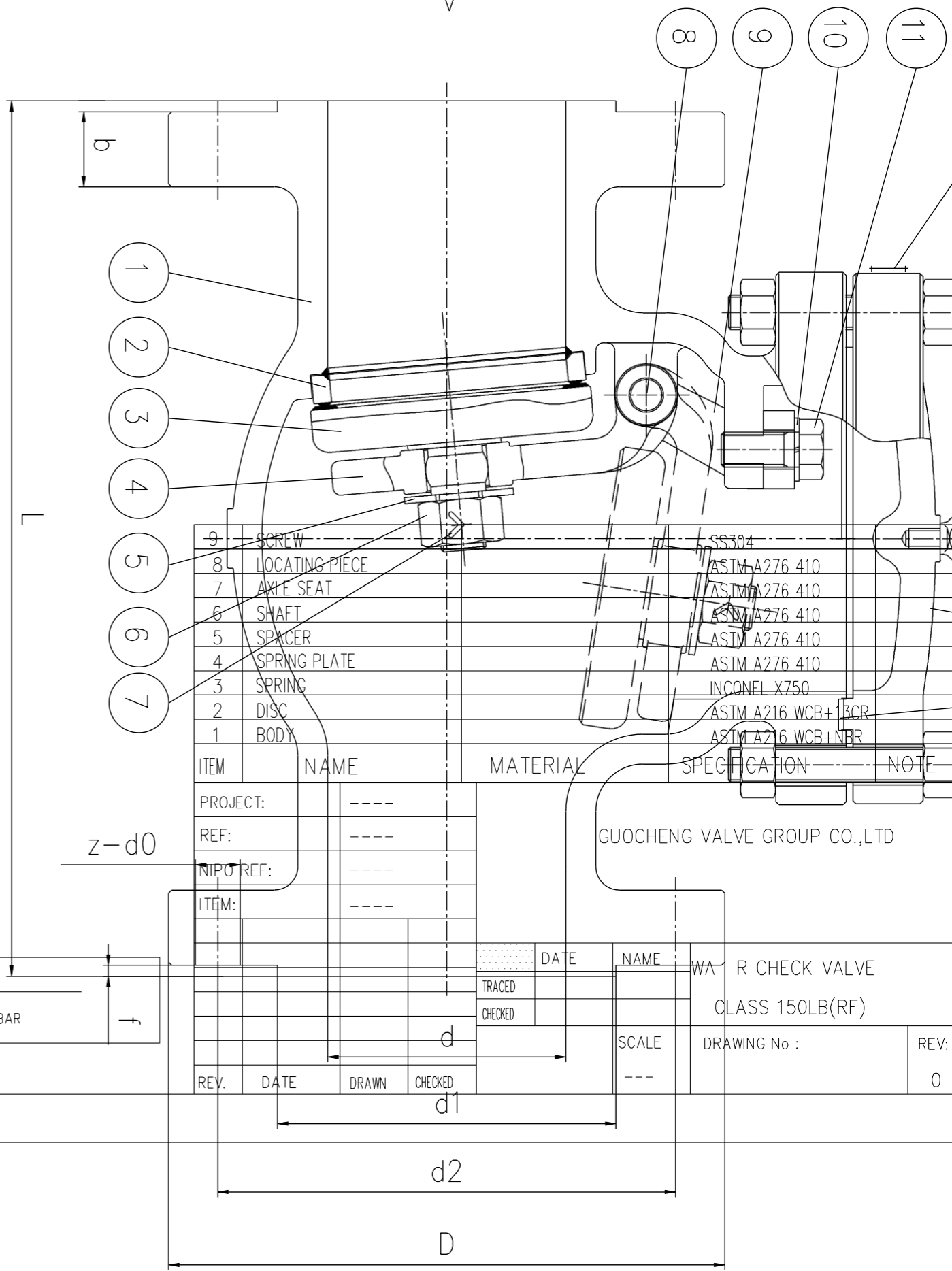


22	Name Plate	SS
21	Rivet	SS
20	Oil Cup	Copper alloy
19	Lock Nut	ASTM A29 1035
18	Handwheel	ASTM A47 32510
17	Clamp Nut	ASTM A29 1025
16	Stem Nut	Copper alloy
15	Nut	ASTM A194 8
14	Eyebolt	ASTM A193 B8
13	Pin	SS
12	Gland Flange	ASTM A351 CF8
11	Gland	ASTM A276 304
10	Packing	Flexible Graphite
9	---	---
8	Bonnet	ASTM A351 CF8
7	Nut	ASTM A194 8
6	Bonnet Bolt	ASTM A193 B8
5	Gasket	304+Flexible Graphite
4	Stem	ASTM A182 F304
3	Wedge	ASTM A351 CF8
2	seal seal	STL
1	Body	ASTM A351 CF8
NO	名称 PART NAME	材料 MATERIAL

CAST STEEL GATE VALVE			Type	
设计 DESIGN BY		GUOCHENG VALVE GROUP CO. LTD		
校对 CHECKED BY		图号 DRAWING NO	版本号 REV	
审核 STANDARD BY		Z40Y-150LB	1	
批准 APPROVED BY		日期 DATE	2022-06-17	
用户确认 THE USER CONFIRM				

- VALVE ACCORDING TO API 594  
 - END TO END ACCORDING TO EN 558-S16  
 ANGED ACCORDING TO ASME B16.47-B

SZ	D	D3	Weight(Yg)
32	241	878	800



TEST PRESSURE TO API 598  
 -SHELL: 29.4 BAR -SEAT: 21.6 BAR

NO	名称	PART NAME	材料	MATERIAL
18	Name Plate		SS	
17	Rivet		SS	
16	Eyebolt		ASTM A29 1025	
15	Nut		ASTM A194 2HM	
14	Stud		ASTM A193 B7M	
13	Cover		ASTM A216 WCB	
12	Gasket	D3	304+Flexible Graphite	
11	Stud		ASTM A193 B7M	
10	Washer		ASTM A36	
9	Fixed hinge		ASTM A216 WCB	
8	Pin		ASTM A276 410	
7	Split Pin		SS	
6	Nut		ASTM A194 2HM	
5	Gasket		SS	
4	Hinge		ASTM A216 WCB	
3	Disc	∞	ASTM A216 WCB+STL	
2	Seal	∞	ASTM A105+STL	
1	Body		ASTM A216 WCB	

尺寸	标注	公差	尺寸	标注	公差	尺寸	标注	公差	尺寸	标注	公差
12"	300		303	303		83.8	PS4		560	381.0	
10"	250		252	252		178.7			510	323.8	
										d1	
										d2	
										d2	
										b	
										f	
										z-do	

CAST STEEL CHECK VALVE

设计	DESIGN BY		图号	DRAWING NO	版本号	REV
校对	CHECKED BY					
标准	STANDARD BY					
批准	APPROVED BY					
用户确认:	THE USER CONFIRM		日期	DATE	2022-08-16	

GUOCHENG VALVE GROUP CO.,LTD  
 WA R CHECK VALVE  
 CLASS 150LB(RF)  
 DRAWING No :  
 REV: 0

**PROFORMA INVOICE**

<b>Seller(name, address):</b> GUOCHENG VALVE GROUP CO.,LTD ADD:HE'SAN INDUSTRIAL ZONE,YONGJIA ZHEJIANG CHINA TEL : 86-577-67996695 Rejstration number : 91330324589049236E Date Of Regration : 08 feb 2012 City of registration : Weizhou city <b>国成阀门集团有限公司</b> <b>GUOCHENG VALVE GROUP CO.,LTD.</b>		<b>Proforma Invoice:</b> CGCVSA02		<b>Validity date of P/I</b> SEP.5 <sup>TH</sup> ,2023			
		<b>Proforma Invoice date :</b> SEP.5 <sup>TH</sup> ,2022		<b>Seller's reference</b>			
		<b>Buyer's Commercial Crad No:</b> 71970137-000					
<b>Consignee (name, address) :</b> PASR SAZE ENERGY ALBORZ CI. ADD: UNIT 3 , NO.10 , ZEITOOON ST , SHARIATI ST , TEHRAN , IRAN		<b>Buyer (name, address):</b>					
<b>Freight forwarder (name, address):</b>		<b>Country of beneficiary : CHINA</b>					
<b>partial shipment:</b>  <b>ALLOW ● NOT ALLOW ○</b>		<b>Country of origin : CHINA</b>		<b>Country of destination : IRAN</b>			
<b>Terms of delivery:</b> By T.T		<b>relevant location :</b>					
<b>Transport mode and means</b> BY SEA	<b>Port/airport of loading :</b> CHINA-NINGBO PORT	<b>Terms of payment:</b>		<b>Transaction currency:</b>			
<b>Port/airport of discharge:</b> B.ABBAS	<b>Final place delivery :</b> MAHSHAHR CUSTOMS	CFR		CNY ¥			
<b>Shipping marks; Transport unit ID</b>	<b>No. and kind of packages Shipping description of goods: wooden pallet</b>						
<b>No. and Kind of standard: API 598</b>							
<b>Item:</b>	<b>Item description</b>	<b>HS CODE</b>	<b>Quantity UNIT</b>	<b>U.W KG</b>	<b>T.W KG</b>	<b>Unit price</b>	<b>TOTAL Amount</b>
1	CHECK VALVE SS , CLASS 150 FLGD . RF . SWING TYPE BOLTED COVER MAT . BODY , COVER & DISCA351 CF8M DESIGN DIMENSION & MARKING ASME B16.5 SIZE 4 IN F TO F: 292MM	84813000	3	39	117	3.840.00	11.520.00
2	CHECK VALVE , 18%CR +10%NI STEEL CLASS 300 SWING TYPE FLANGED RAISEDFACE BOLTED COVER MAT.BODY AND TRIM TO ASTM – A743 GR.CF8M , FLANGE DIMENSION & DRILLING TO ANS B16.5 SIZE 2 IN F TO F : 267MM	84813000	2	20	40	2.268.00	4.536.00
3	GATE VALVE 18%CR +10NI STEEL CLASS 150 FLANGED RAISED FACE SOLID WEDGE OS & Y BOLTED BONNET BOLTED GLAND STEM RISING DESIGN DIMENSION & MARKING TO API 600 MAT . CAST STAINLESS STEEL TO ASTM A351/CF8 TRIM AISI 304 STUDS TO ASTM A193 GR.B7 SIZE 6 IN F TO F : 267MM	84818090	5	72	360	5.359.00	26.795.00
4	CHECK VALVE DUAL PLATE WAFER TYPE . C.S CLASS 150 FLGE FF , MAT.BODY A216 WCB WEDGE WCB + 13CR SEAT RING NBR SPRING INCONEL X-750 RUBBER LINED FLANGED ACC.TO ANSI B16 47B DESIGN DIMENSION & MARKING TO API 594 SIZE 32 IN F TO F 241 MM	84813000	5	420	2100	35.410.00	177.050.00
5	SWING CHECK VALVE END TYPE : RAISED FACE FLANGES FACE TO FACE ACCORDING TO ASME B16.10 BODY MATERIAL : C.S TRIM : MATERIAL 13% 13 CR + HF SERVICE DEA BOLTED COVER ACC : NACE MARO175 DISC : A216 WCB + STL SEAT RING : A105 + STL 6001B SIZE 10 INCH	84813000	2	538	1076	16.713.00	33.426.00
6	SWING CHECK VALVE END TYPE : RAISED FACE FLANGES FACE TO FACE ACCORDING TO ASME B16.10 BODY MATERIAL : C.S TRIMS : MATERIAL : 13% 13 CR + HF SERVICE : DEA BOLTED COVER ACC : NACE MARO175 DISC : A216 WCB + STL SEAT RING : A105 + STL 6001B SIZE 12 INCH	84813000	2	700	1400	23.463.00	46.926.00
	<b>TOTAL</b>		19 SET	1789	5093		310.378.00 ¥
	<b>FRIEGHT CHARGES</b>			826 KG	918 KG		10.125.00 ¥
							<b>Total amount</b> 310.378.00 ¥
		<b>NAME OF SIGNATORY</b>					
It is hereby certified that this invoice shows the actual price of the goods described, that no other invoice has been or will be issued, and that all particulars are true and correct		PLACE AND DATE OF ISSUE SEAL AND SIGNATURE					